



CONSTRUCCIONES MECANCIAS

MONTERREY S.A. de C.V.

Monterrey, Nuevo León,  
México





# EMMSA



## INTRODUCTION

- Exportaciones Mecanicas Monterrey, S.A. de C.V. (EMMSA), is a private group of companies, made up of 10 Mexican firms which consists of 6 companies in the Metal Mechanic Industry. 1 Foundry Company, 1 rubber roller company and 2 support companies.



TALLERES  
CASTELLANOS  
SA de CV



PRECISION ROLLER  
Genauigkeit Rollen





It is in 1986, when COMMSA as leader company forms the Group Exportaciones Mecánicas Monterrey (EMMSA), and for the past 35 years we have worked together in consortium to offer a complete service on the Manufacturing needs of the market. If there is a project that demands higher capital to finance projects we can do it together. COMMSA is in charge of leading the Manufacturing and Project Management using all the available resources with in the group.





# FOUNDERS COMPANIES



- AG-METAL S.A. de C.V.
- ACERO REY S.A. de C.V.
- BENGO INTERNACIONAL S.A. de C.V.
- BINGHAM DE MEXICO S.A. de C.V.
- CONSTRUCCIONES MECANICAS MONTERREY S.A. de C.V. (COMMSA)
- ELECTRO ACERO Y HIERRO S.A. de C.V.
- IIRSACERO S.A. de C.V.
- MECANICA INDUSTRIAL BADILLO S.A. de C.V.
- TALLERES CASTELLANOS S.A. de C.V.





# SOME OF OUR CUSTOMERS



## Foods and Beverages

## Engineering



## Environmental Production



## Iron and Steel

## Chemistry and derivatives





**COMMSA**



Our experience and personal contact with senior engineers from Mexico, Canada, Japan, Europe, and the USA has permitted us to be the first in Mexico to ever construct the main equipment used for continuous casting machines and hot strip mill lines.

Regarding quality, it has been very beneficial to us to manufacture projects under the direct supervision of foreign and domestic company's project management personnel such as Altos Hornos de Mexico S.A. DE C.V., Mitsui, Hitachi Zosen, and Hitachi Ltd. of Japan, Voest-Alpine of Austria, EIMCO/Baker of the USA, and Mannesmann Demag of Germany, just to mention a few of them.





With this group of companies lead by COMMSA we have the capacity to manufacture, assemble, Cold Test, Commission and Start Up the equipment's that we manufacture.

We have the expertise to Help on the installation process and connecting the Electrical, Pneumatic and Hydraulic systems so we can Cold Test them in our plant prior to shipment.

We also have an Engineering department to Help design new components and Help develop projects for our costumers and their needs.





# Construcciones Mecánicas Monterrey, S. A. de C. V. (COMMSA)



Founded in Monterrey, Nuevo León, México in  
March 1961

## **OBJETIVE:**

Design, manufacture, repair, and assembly of heavy machinery and processing equipment for the industry in general.

## **MAIN PRODUCTS:**

- Heavy machinery and processing equipment.
- General repair design.
- Maintenance of machinery and equipment.
- Mechanical structures.
- Welding areas in general.

## **MAIN VALUES:**

- HONESTY
- TEAM WORK
- RESPONSABILITY
- DISCIPLINE
- CUSTOMER ORIENTED







# QUALITY POLICY



All staff focus its efforts primarily to Identify and meet the needs of our customers.

Manufacturing qualified machinery and equipment, generating actions to ensure your satisfaction and exceeding your expectations in our products.

To achieve them, we promote, Honesty, teamwork and the continuous improvement in our process, looking for the excellence in our results, based on International Quality Norms.

## CERTIFICATIONS BY:



Welding Procedures and Inspections



Calibration of Measuring Equipment



Personnel Training & Chemical  
Analysis of Materials





COMMSA



# SOME

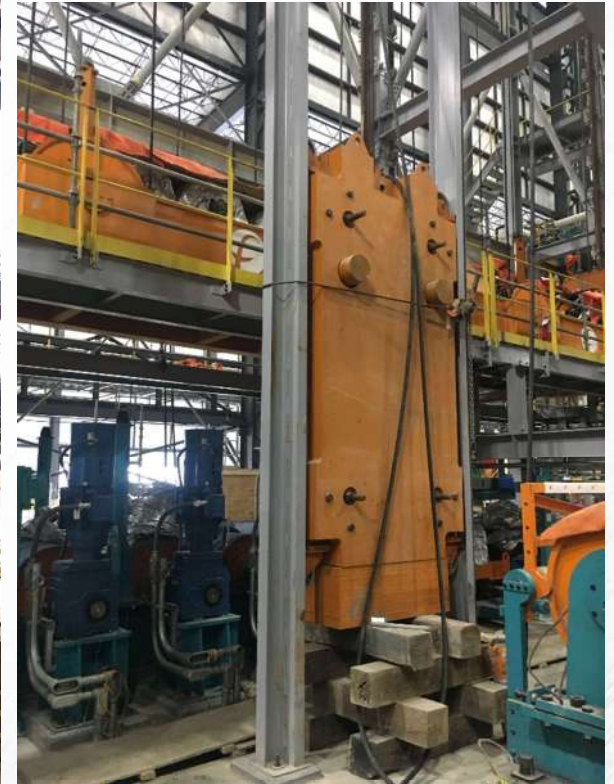
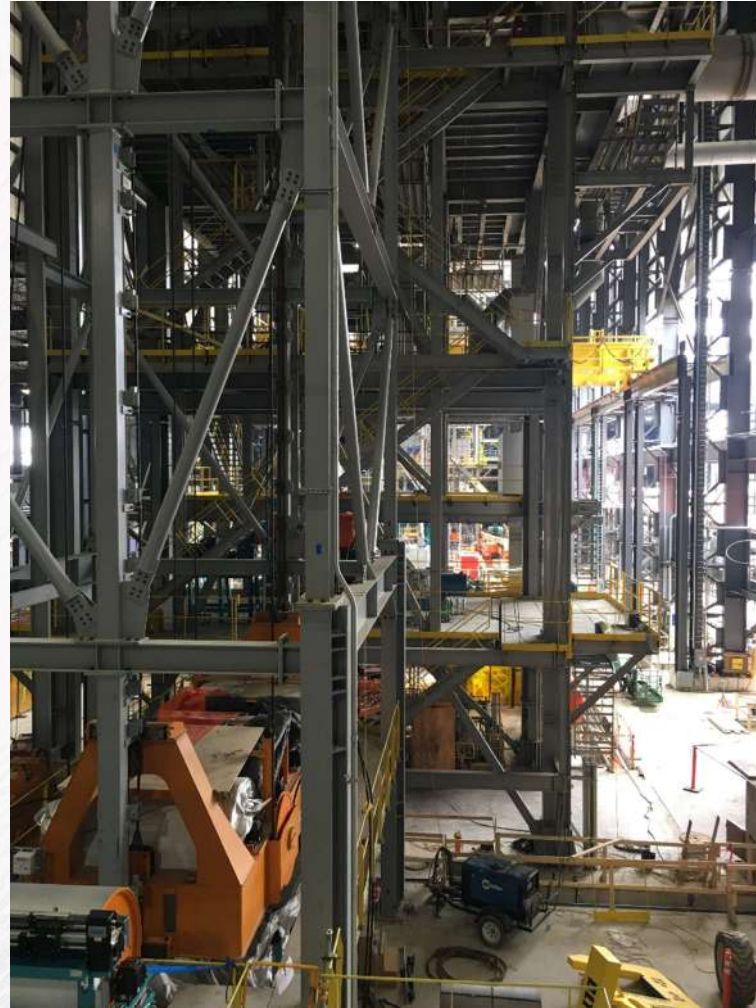
# PROJECTS



COMMSA



COMMSA



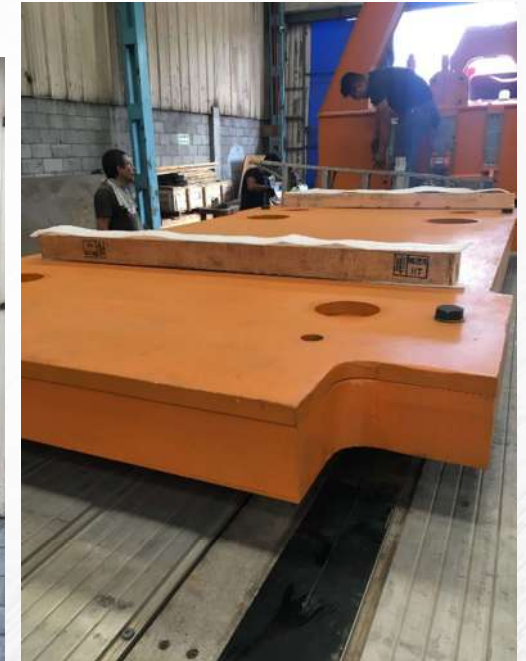
Specialized within the following production areas: Steel mills, Coil Processing lines, Hot & Cold Rolling Mills, Tube mills equipment, anti-contamination equipment for water, solids and gases. The first ever Mexican Company to fabricate an Oscillator for the Continuous Casting Slab Process.



COMMSA



# Vertical Accumulation Looper Car & Counter weight





# Transfer Car – Liquid Steel Pot

CARRO TRANSFER PARA OLLA  
DE ACERO LIQUIDO





# HOT STRIP MILL ROLLER TABLES @ AHMSA – HITACHI LTD





**COMMSA**

# QUICK WORK ROLL CHANGER – HITACHI LTD.



**COMMSA**



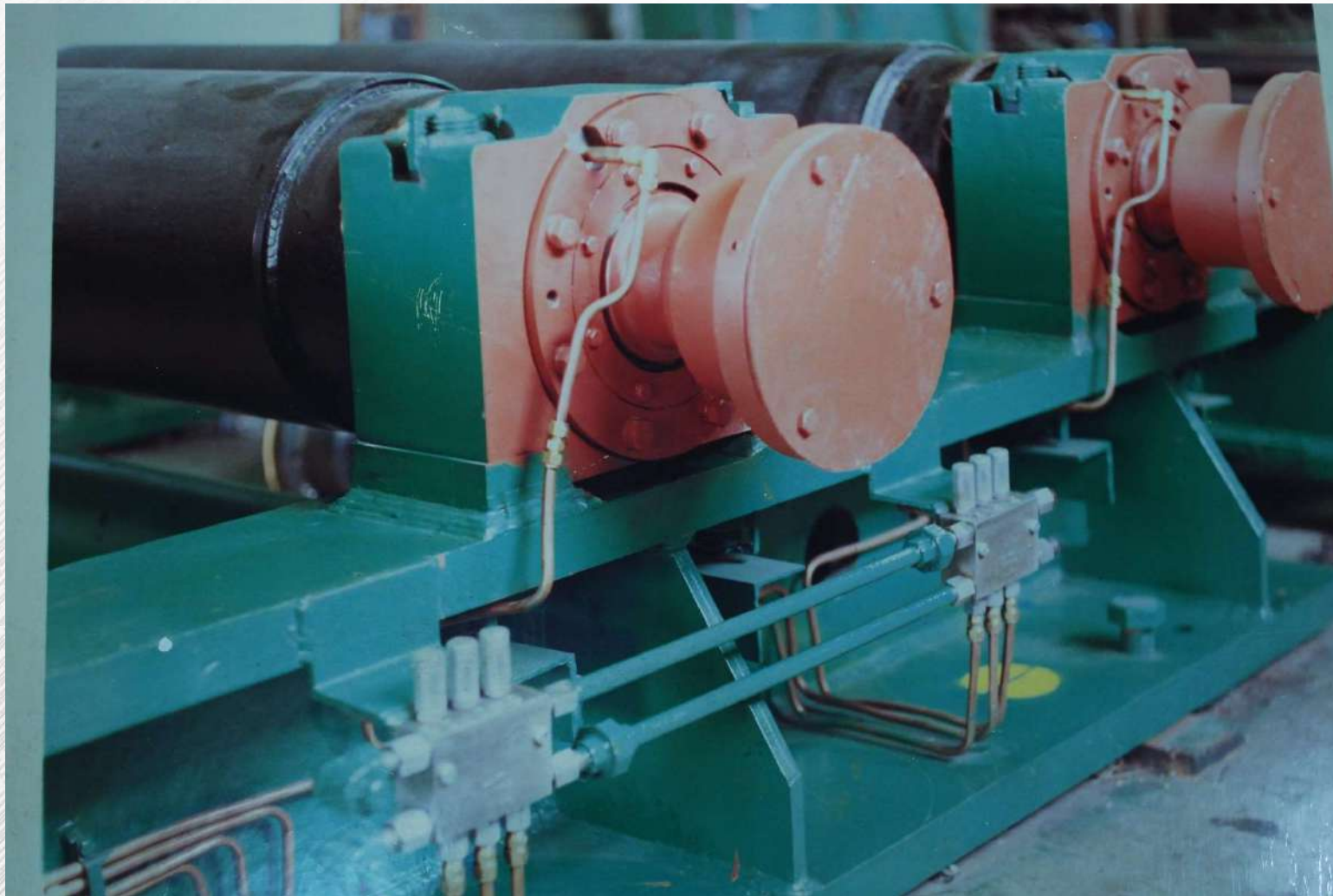
# SLAB CASTER – HITACHI ZOSEN







# AUTOMATIC LUBRICATION SYSTEM FOR ROLLER TABLES – HITACHI LTD.





# HELICAL SCREW CONVEYOR FOR CEMENT





COMMSA



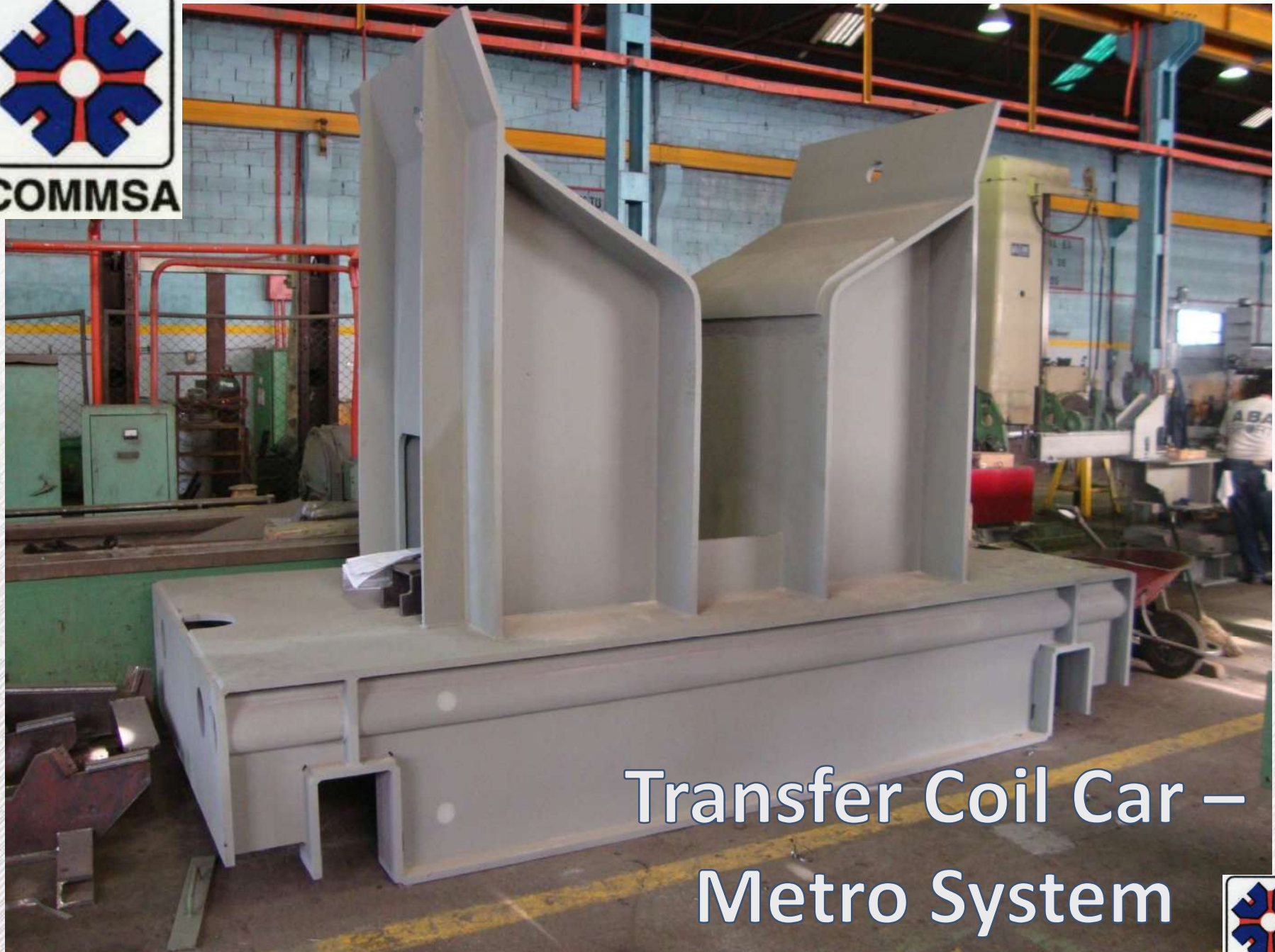
Helical Screw Conveyor – Cold  
Tested In COMMSA



COMMSA



COMMSA



Transfer Coil Car –  
Metro System



COMMSA



COMMSA



CASSETTE ROTATOR



COMMSA



COMMSA



Cassette Rotator – Tube Mill



COMMSA



COMMSA



Tube Stacking Transfer Car



COMMSA



# Pipe Grippers PT-20







COMMSA

# Coil Processing Lines Side Guides



COMMSA



COMMSA



Heat Exchanger



COMMSA



COMMSA

# Heat Exchanger



COMMSA



COMMSA

# TURNSTILE



COMMSA



# COIL CAR With Over Arm





# COIL CAR With Over Arm





# Hydraulic Stands and Manifold Integration





# Electrical Cabinets, Junction Boxes, On Machine Wiring





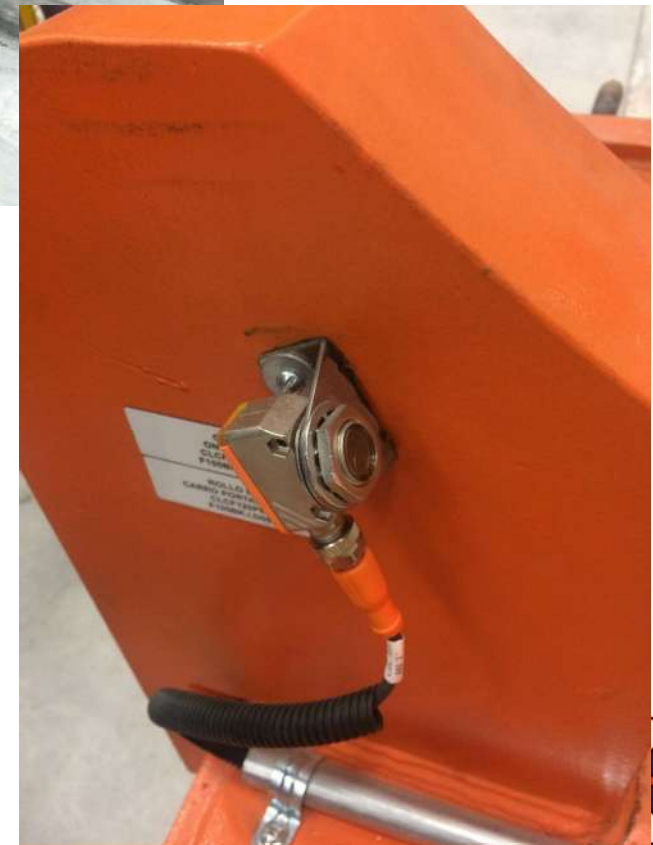


# Electrical Cabinets, Junction Boxes, On Machine Wiring





Electrical  
Cabinets,  
Junction  
Boxes, On  
Machine  
Wiring





# Electrical Cabin for Galvanizing Line





**COMMSA**

# Heavy Welding and Machining





# Fumes Extraction Equipment





COMMSA

# Tube Mill Equipment - Conveyors



COMMSA



# Catenary Transfer Tables for Press Pit





COMMSA

# Rotatory Furnace



COMMSA





COMMSA

# Rotatory Furnace



COMMSA



# Rotatory Furnace





# Horizontal Looper Car for Galv Line





# Fabricacion y Cambio de estructuras Metalicas





# Plug Bars para Laminación de Tubos de 10" diámetro





COMMSA

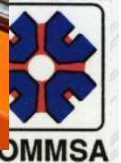
# Winch Frame assembly



COMMSA



# Rolling Trolleys at Operator stations





# Rolling Trolleys at Operator stations







# THANK YOU FOR YOUR ATTENTION



**Ing. Humberto G. Castellanos Serna**  
**Ing. Humberto A. Castellanos Campa**

**CONSTRUCCIONES MECANICAS MONTERREY SA de CV**

Ave. Los Ángeles 650 Ote. Colonia Del Norte  
Monterrey, Nuevo León, México CP 64500

Office: +52-818-351-0962, +52-818-351-0276

Celular: +52-1-818-253-2545

Email: [hcs@construccionesmecanicas.com.mx](mailto:hcs@construccionesmecanicas.com.mx)

[www.construccionesmecanicas.com.mx](http://www.construccionesmecanicas.com.mx)

